



E&V ID W-046M01

SANTA EULALIA - SIESTA

Duplex with two independent apartments

TOTAL SURFACE

approx. 104 m²

NUMBER OF BEDROOMS

3

TERRACE SIZE

approx. 45 m²

ASKING PRICE

€545,000



Property Details

Total Surface

approx. 104 m²

Terrace Size

approx. 45 m²

Number of Bedrooms

3

Asking price

€545,000

Total Number of Bathrooms

2

Independent Studio Flat

✓

Air-Condition

Ducted Air-conditioned

Fireplace

✓

Commission Text

Availability upon agreement.

Engel & Völkers does not accept responsibility as the information provided in this brochure is for information only and it is subject to errors, omissions, change of price or withdrawal without notice.

Taxes, notary and registry fees must be paid by purchaser, the commission to E&V paid by the seller as stipulated by Spanish regulations.



Property Description

This is a rare opportunity to acquire a contemporary duplex in one of Ibiza's residential areas — Siesta, just a short distance from the town of Santa Eulalia and its vibrant marina, beaches, and amenities.

The property is cleverly designed as two fully independent apartments, offering exceptional versatility and investment potential. Whether you're looking for a home that accommodates an extended family or a smart rental property with dual income streams, this duplex offers the best of both worlds.

The upper level features a bright and airy living space that opens onto a generous terrace, boasting serene views of the forest and a glimpse of the sea. This level also includes two comfortable bedrooms and a well-appointed bathroom, making it perfect as a primary residence or holiday home.

The lower level is a self-contained one-bedroom apartment with its own entrance, bathroom, and living area — ideal for guests, long-term rental, or even as a private retreat for family members. This setup allows multiple generations or groups to enjoy the property simultaneously, while still maintaining privacy and independence.

Adding further value, the property includes an additional 100 square meters of adjacent land. This extra space could be seamlessly integrated into the downstairs unit, transforming it into a private garden oasis — perfect for relaxing, entertaining, or creating a lush Mediterranean escape.

Whether you're an investor looking for rental potential, a family in need of flexible accommodation, or simply someone seeking a peaceful yet well-connected Ibiza home, this duplex is a compelling option with unique features and excellent potential.



Location Description

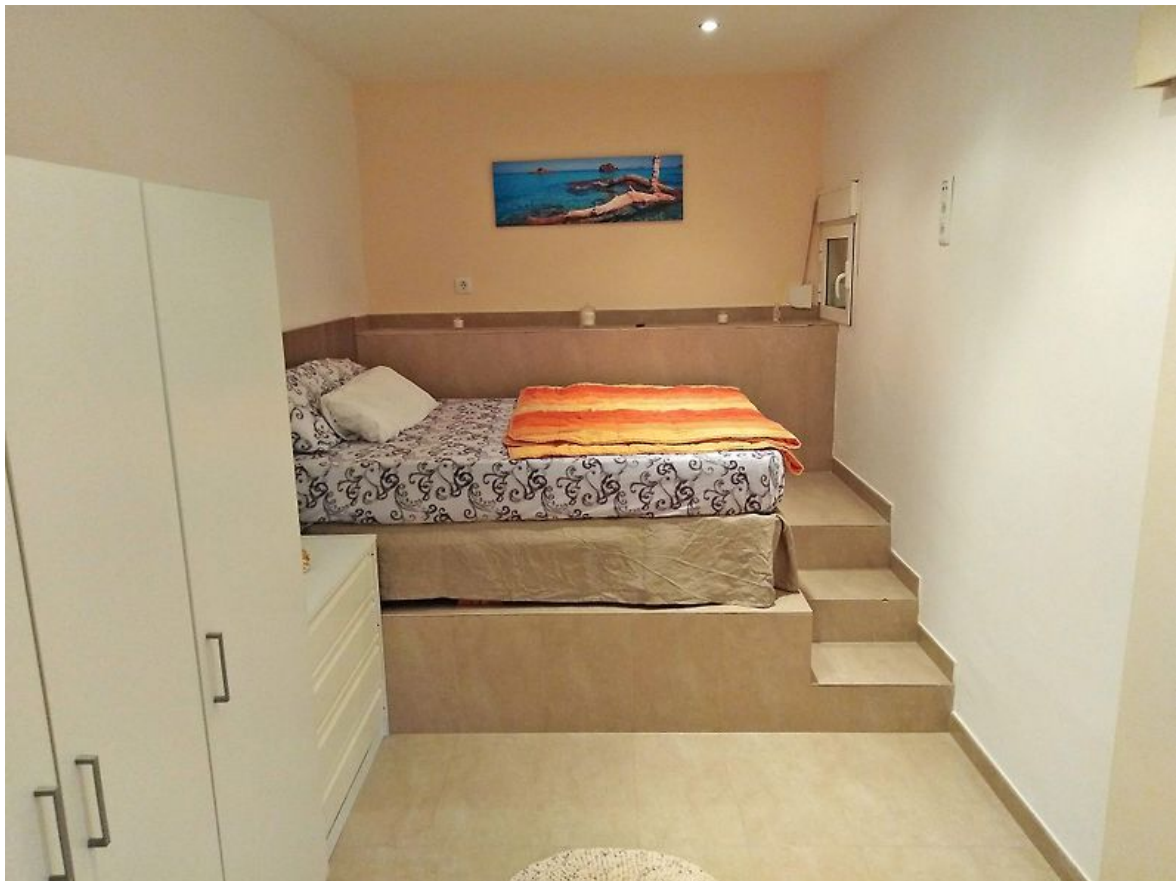
Siesta is a nice residential area on a hillside, surrounded by pine trees and overlooking the beautiful Mediterranean Sea up to the town of Santa Eulalia. Siesta and Santa Eulalia are separated by Ibiza's only river. You can conveniently walk into Santa Eulalia over a small

bridge and along the promenade next to the beach. Siesta has its own nice, quiet little beach and is a relaxed alternative to some busier beaches.











ESCALA DE LA CALIFICACIÓN ENERGÉTICA

Consumo de energía
kWh / m² año

Emisiones
kg CO₂ / m² año

A más eficiente		
B		
C		
D		
E	150.4	45.5
F		
G menos eficiente		

Important Notice

In compliance with the current Personal Data Protection Law, we inform you that your personal data were included in an automated file owned by Engel & Völkers Ibiza, S.L., with CIF B57138182 and fiscal address at Avda. Santa Eulalia, 17 bajos, 07800 Ibiza, Spain, to attend to the commitments derived from the relationship between the two parties. Engel & Völkers Ibiza, S.L. informs that all data will be handled lawfully, loyally transparently, appropriately, suitably, with restrictions, precisely and kept up to date. You may exercise your right to access, rectify, limit treatment, suppress, withdraw and oppose to your personal data treatment, as well as the consent provided for its treatment by sending your request by email to SantaEulalia@engelvoelkers.com.

